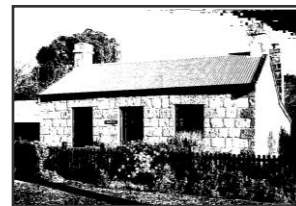
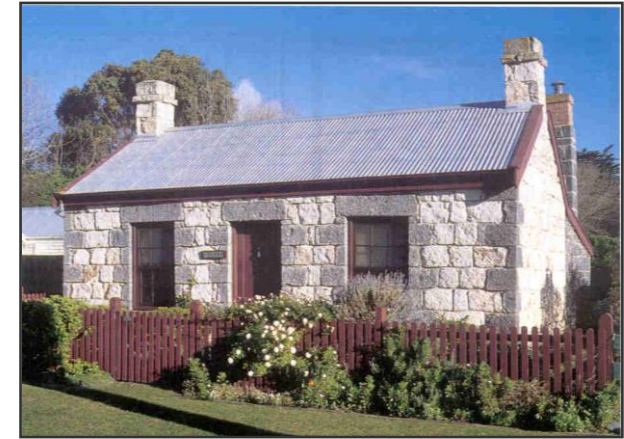


Port Fairy

Port Fairy is a 19th century sea port located on the Moyne River in Victoria's Western District.

Originally a fishing village, Port Fairy retains its original streetscape of wide streets and small whalers' cottages. The old buildings give the visitor a chance to step back into history into a calmer and quieter existence.

A series of ocean-formed coves can be explored along the many interesting scenic walks.



Tara Cottage
131 Griffiths Street
Port Fairy 3284
Tel/Fax 03 9818 2532

www.port-fairy.com/taracottage
email: taracottage@port-fairy.com

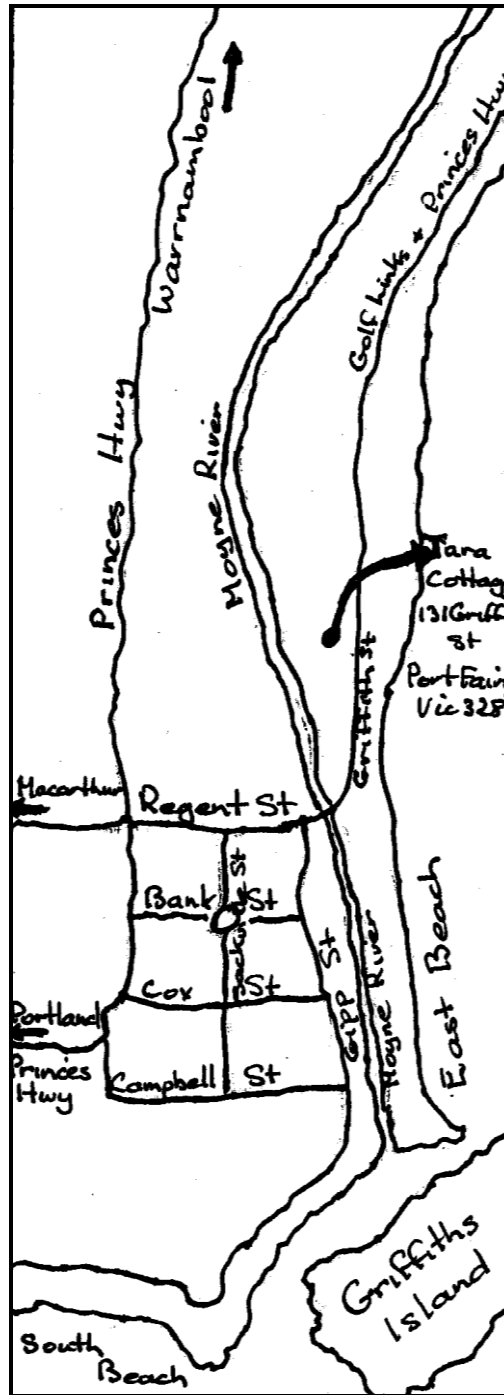
Tara Cottage

131 Griffiths St
Port Fairy

This lovingly restored 1850's bluestone whaler's cottage, has been fully renovated. It has the comfort of the 21st century living whilst maintaining the charm and atmosphere of the 19th century. Only a block from the Eastern Beach, the cottage has the Moyne River on one side and the Botanic Gardens on the other.

The cottage has:

- lounge room with an open fireplace and stone chimney
- fully self contained kitchen
- modern bathroom – toilet, shower and a large bath
- bedroom with a double bed
- period furniture
- picturesque cottage garden
- private back entrance
- sunroom with reverse cycle heater/cooler



The cottage is fully self contained. You will need to bring:

- ◆ pillow cases
- ◆ sheets, towels
- ◆ tea towels
- ◆ bathmat

(Linen supplied \$15)

The kitchen is fully equipped with a gas/electric stove, a microwave and a dishwasher. Cutlery, crockery and saucepans are provided.

The bathroom has a large claw foot bath, and shower. There is an electric hot water unit.

The laundry has a washing machine, ironing board and iron.

The lounge has an open fireplace. Sufficient dry wood is supplied

RATES

28 February – 12 December – weekend

- ◆ \$250 double
Friday evening to Sunday
- ◆ \$450 double – long weekend
Friday evening to Monday
- ◆ \$450 double 4 nights
Monday to Friday
- ◆ \$700 double – full week
7 nights
- ◆ \$575 double – Easter
Thursday evening – Monday

13 December – 29 January

- ◆ \$925 double – Full week 7 nights

30 January – 27 February

- ◆ \$750 double – Full week 7 nights